

Rentable Office Space		35,390
13	EDUCATION	450
16	REVENUE	4,214
	ROOM 39	3,615
	ROOM 16	599
24	MOTOR VEHICLES	149
25	DHHS	10,831
	Area A	4,253
	Area B	4,052
	Area C	2,526
65	AS/CONF.	3,948
	Otoe -	1,205
	Morrill -	803
	Sarpy -	903
	Lancaster -	1,037
65.4	AS/BUILDING DIV.	9,728
	OFFICES/SHOP	4,102
	STORAGE	4,527
	JANITOR	124
	COT ROOM	96
	CORPORAL'S OFFICE	85
	VACANT	794
65.6	AS/OCIO	3,547
	OCIO - B	736
74	POWER REVIEW BRD.	1,276
	STORAGE	98
77	INDUSTRIAL RELATIONS	100
78	CRIME COMMISSION	761
91	TRAVEL AND TOURISM	384
COMMON		36,731
	CANTEEN	2,594
	VENDING	200
	MECH/COMM. CLOS.	20,809
	ELEV/STAIR/HALLWAY	11,628
	EMERGENCY STAIRS	1,500
TOTAL		72,121

NEBRASKA STATE OFFICE BUILDING  
LINCOLN

LOWER LEVEL PLAN

0

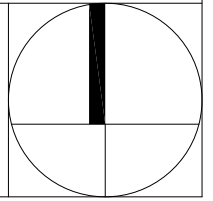
15

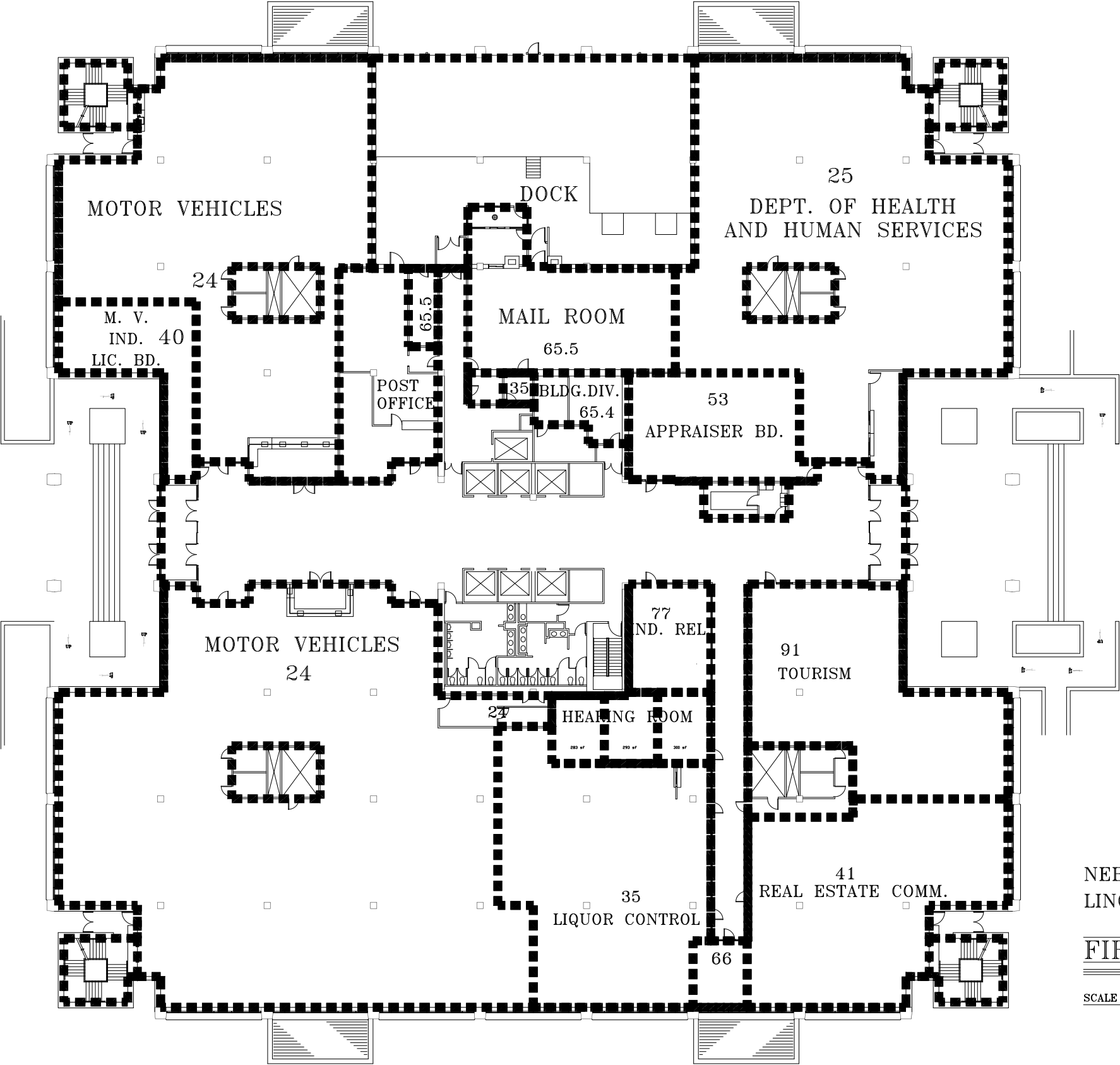
30

60

SCALE

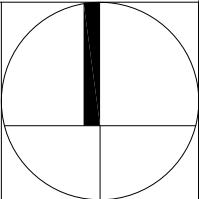
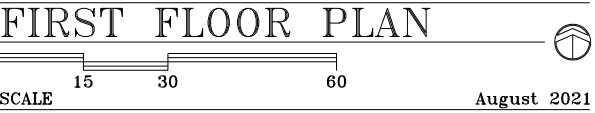
September, 2022

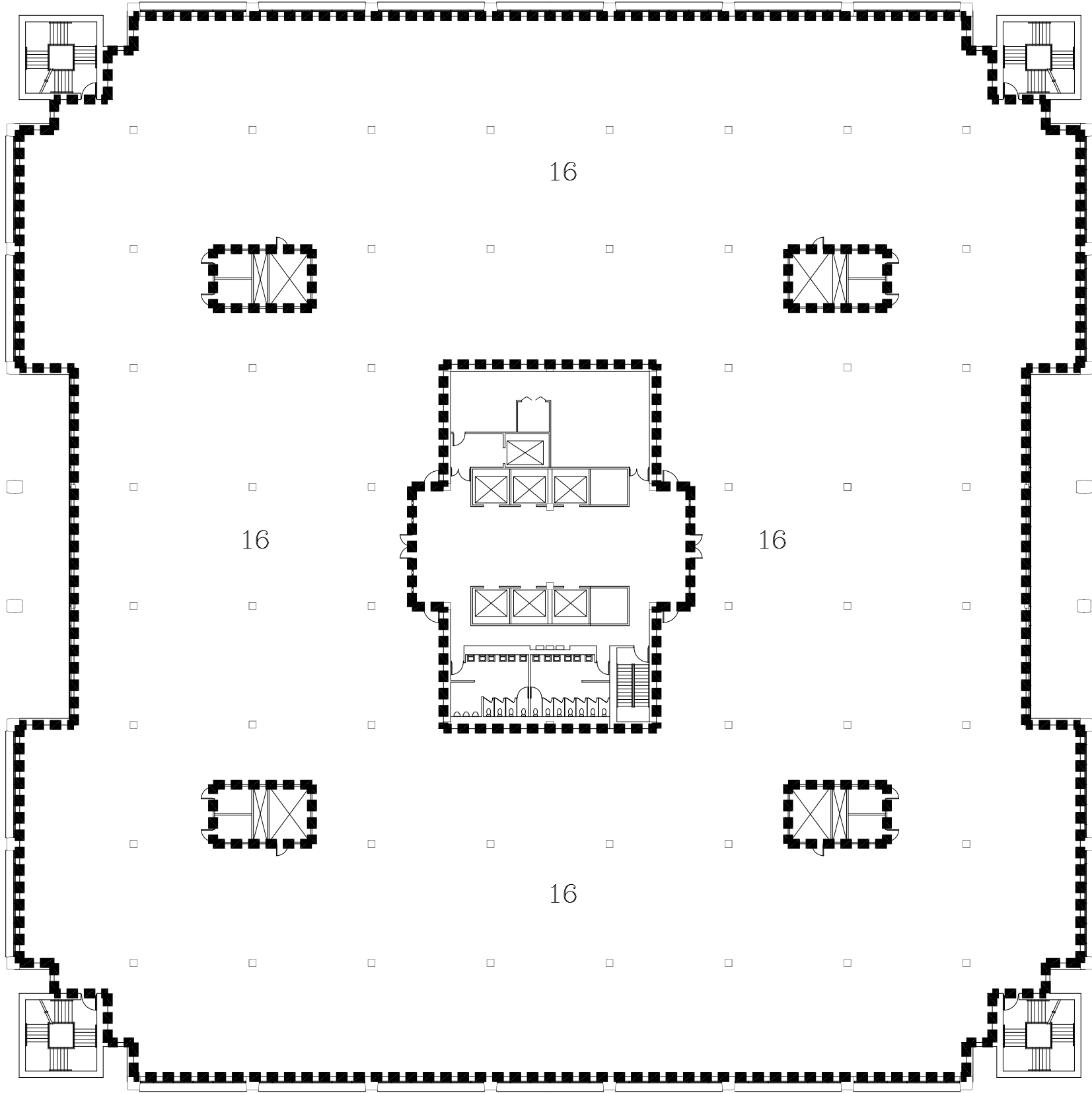




AGENCY	AREA
Rentable Office Space	41,990
24 MOTOR VEHICLES	19,370
25 DHHS	7,699
35 LIQUOR CONTROL	4,276
Hearing Room	300
Storage	76
40 M.V. IND. LIC. BD.	1,048
41 REAL ESTATE COMM.	3,458
53 APPRAISER BOARD	1,490
66 ABSTRACTERS BOARD	285
74 POWER REVIEW BD.	293
Hearing Room	293
77 INDUSTRIAL RELATIONS	988
Hearing Room	283
91 TOURISM	3,083
COMMON	22,882
Scooters	251
Building Division	537
Mail Room	2,193
Emergency Stairs	1,414
Post Office	1,412
Comm. Closet	1,710
Dock	5,104
Lobby	10,251
TOTAL	64,872

NEBRASKA STATE OFFICE BUILDING  
LINCOLN





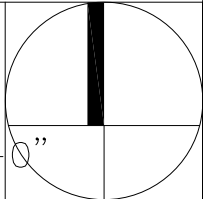
AGENCY	AREA
Rentable Office Space	59,776
16 REVENUE	59,776
COMMON	5,434
COMM.CLOSETS	1,488
EMER. STAIRS	1,500
TOTAL	68,198

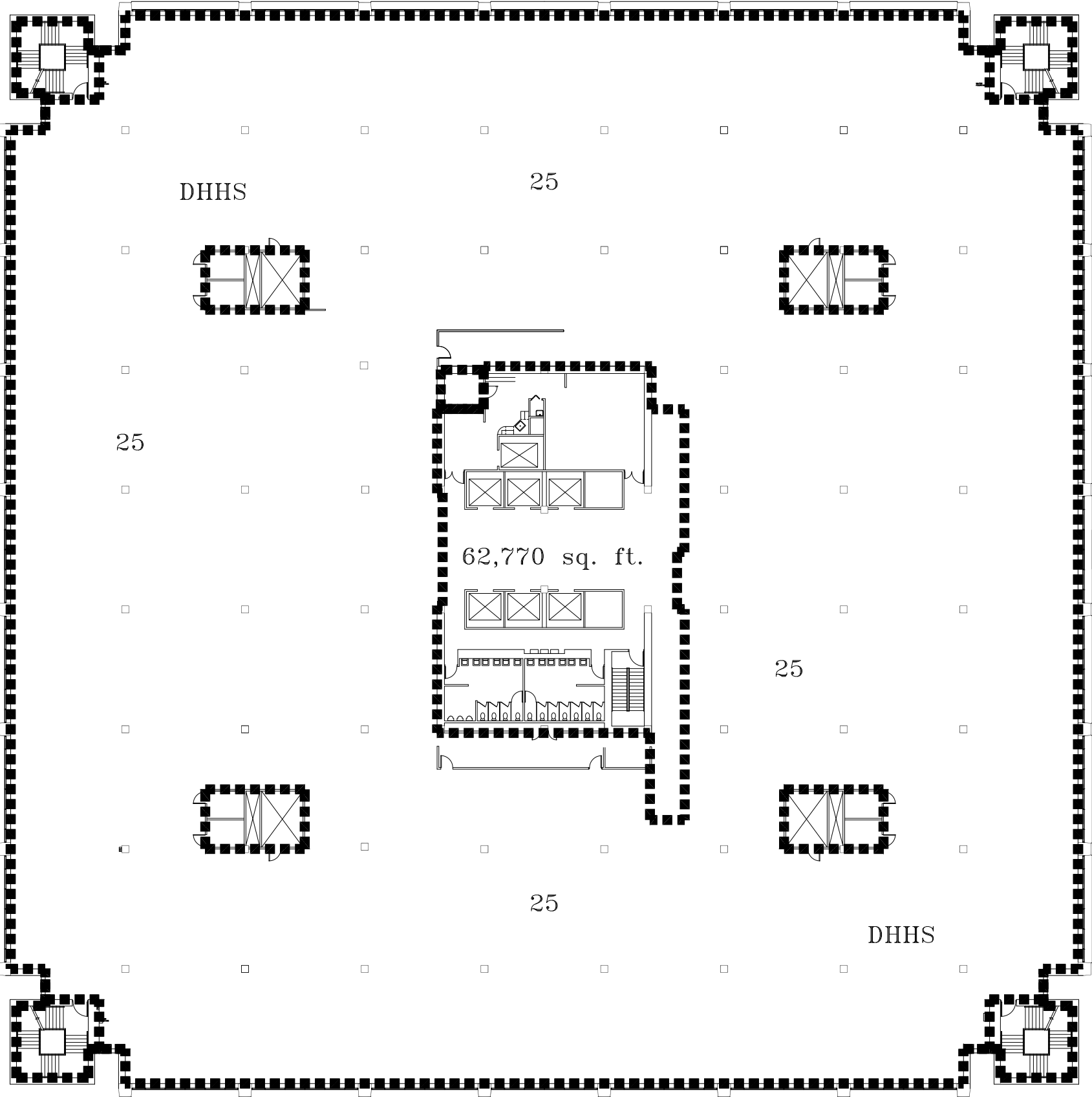
NEBRASKA STATE OFFICE BUILDING  
LINCOLN

SECOND FLOOR PLAN



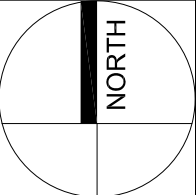
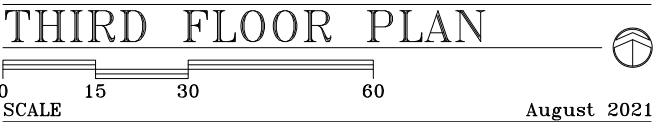
August 2016

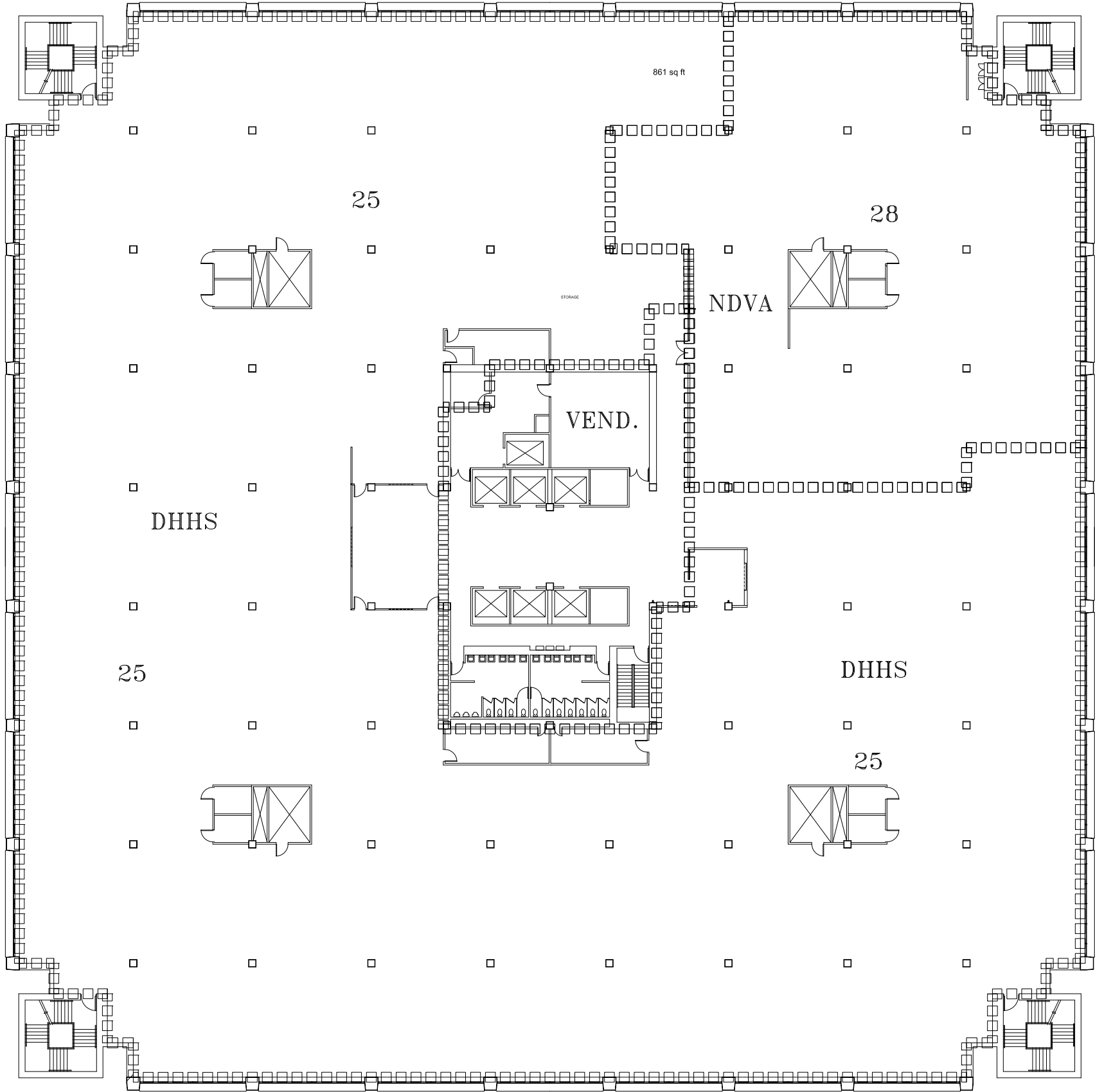




AGENCY		AREA
Rentable Office Space		62,062
25	DHH SERVICES	61,957
65.4	DAS	105
COMMON		5,604
COMM. CLOSETS		1,488
EMERGENCY STAIRS		1,500
TOTAL		70,654

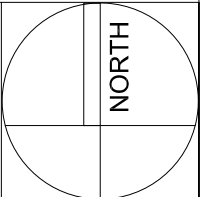
NEBRASKA STATE OFFICE BUILDING  
LINCOLN

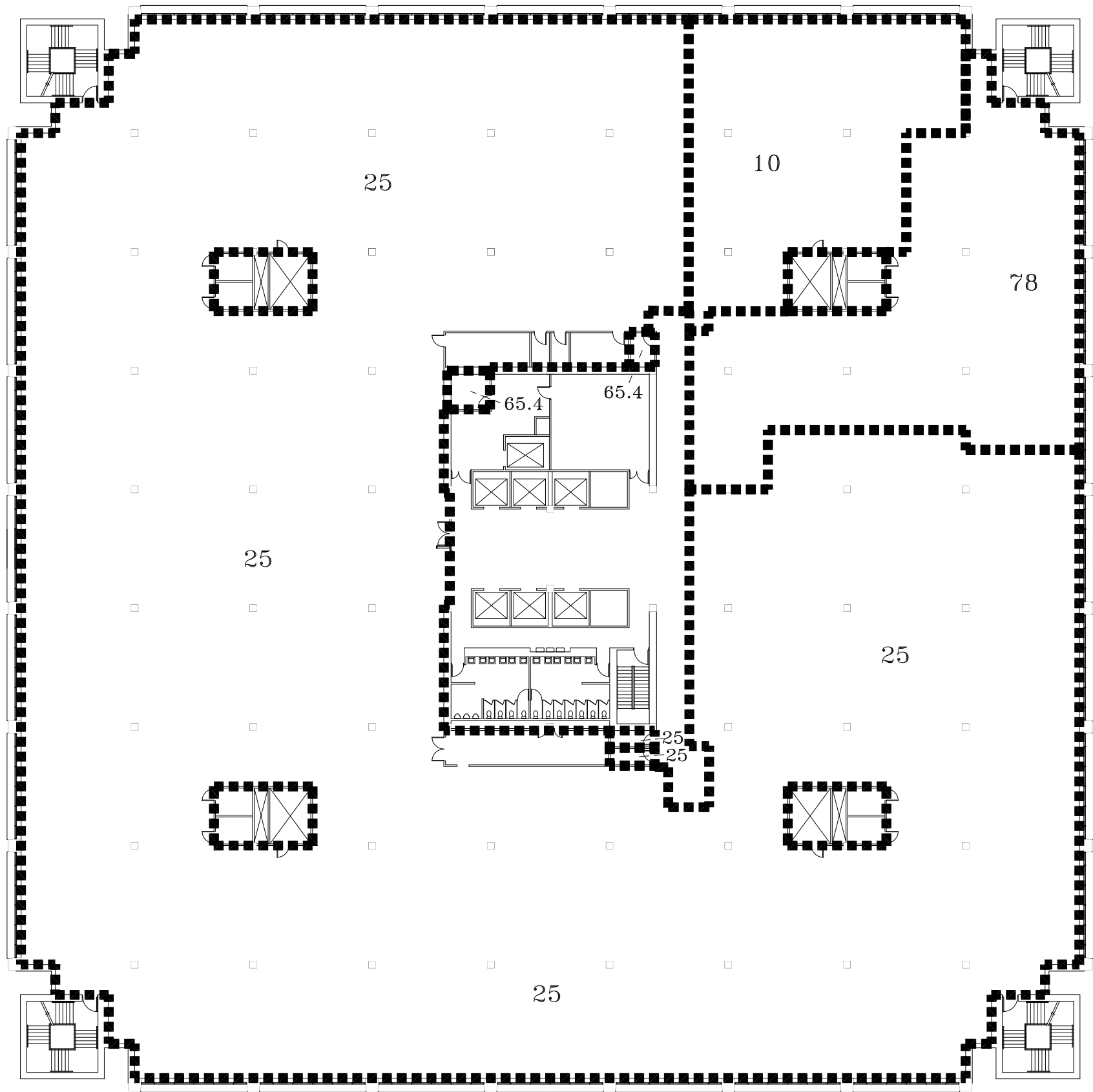




AGENCY		AREA
Rentable Office Space		62,211
25	DHHS	51,444
28	VETERAN'S AFFAIRS	10,767
COMMON		5,455
COMM. CLOSETS		1,488
EMERGENCY STAIRS		1,500
TOTAL		70,654

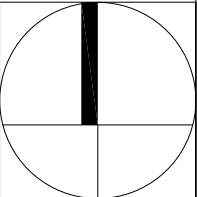
NEBRASKA STATE OFFICE BUILDING  
LINCOLN

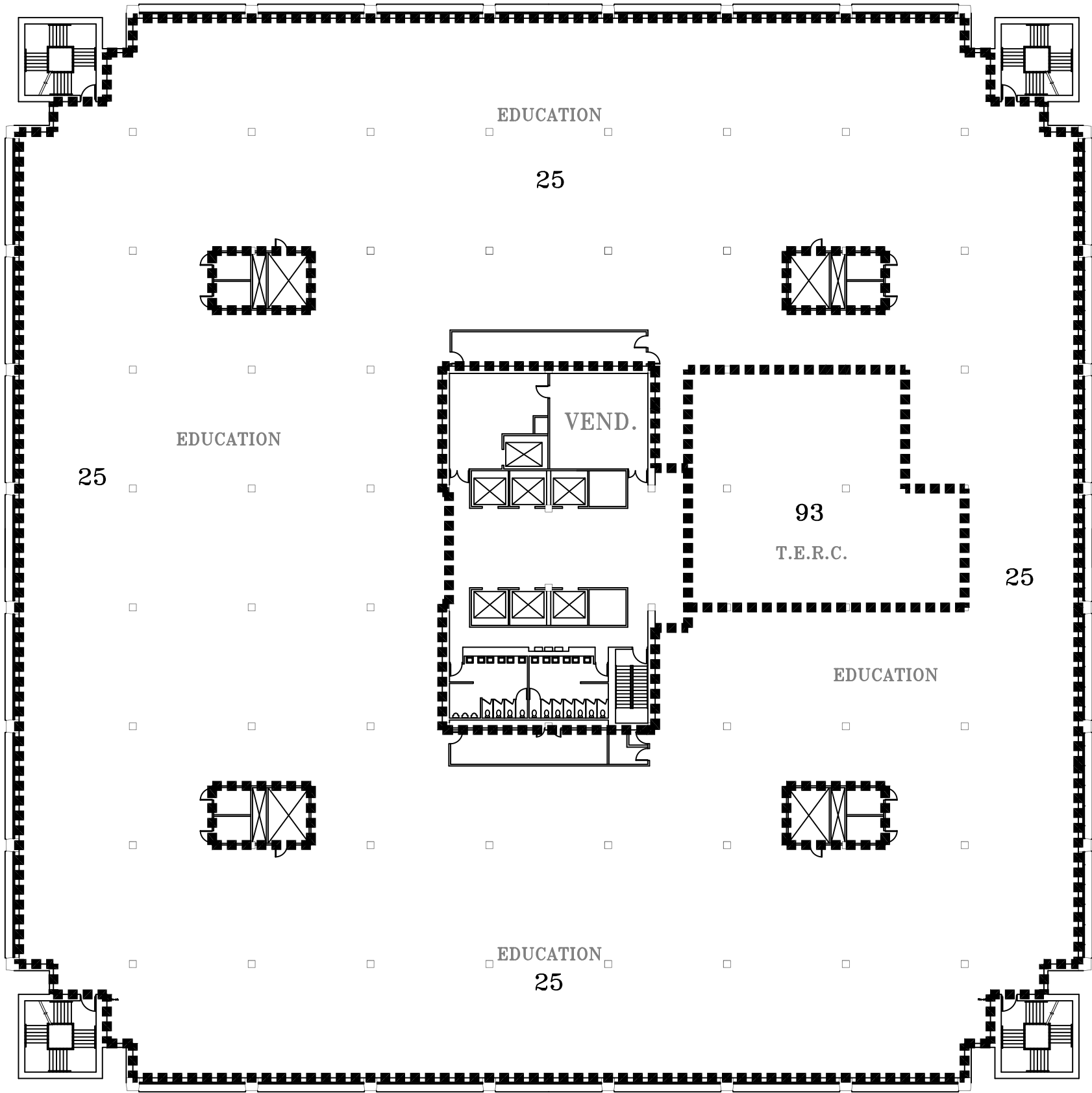




AGENCY	AREA
Rentable Office Space	61,791
10 AUDITOR	4,060
25 DHHS	51,918
65.4 DAS	162
78 CRIME COMMISSION	5,651
COMMON	5,875
COMM. CLOSETS	1,488
EMERGENCY STAIRS	1,500
TOTAL	70,654

NEBRASKA STATE OFFICE BUILDING  
LINCOLN





AGENCY	AREA
Rentable Office Space	62,417
25 DHHS	58,677
93 T.E.R.C.	3,740
COMMON	5,247
COMM. CLOSETS	1,488
EMERGENCY STAIRS	1,500
TOTAL	70,652

NEBRASKA STATE OFFICE BUILDING  
LINCOLN /EDUCATION

